

Camping Fees

**£4.60 per person per day*

The above price includes the Camp Site & Firewood. Pioneering, Games, Orienteering Maps, Photo Orienteering and Tree Trail Equipment are available at no extra charge.

Early set up charge

If you wish to set up camp/building early please arrange this with the site staff. This will depend on the availability of the site/building and there may be a nominal charge made depending on time, building and number of tents etc.

Day Visitor to the Centre

**£3.00 per person*

Groups wishing to use Walton Firs for a day of adventurous activities or for training are welcome. The same activities and equipment as above are available at no extra charge.

Evening Visits

Groups are welcome to book an evening visit to play wide games, fire lighting etc.

**£30.00 per section*

We also offer activities with an instructor on certain evening. The cost is £50.00 per hour but there is no group visitor charge.

Instruction finishes at 20.00.

Please call for availability.

Cost of Centre Activities

PRICE PER GROUP PER HOUR

With full Instruction

Caving Experience £40.00
Max number per group 12, minimum age 6

Climbing £40.00
Max number per group 12, minimum age 7

Crate Stacking £40.00
Max number per group 12, minimum age 7

Archery £40.00
Max number per group 16, minimum age 7

Air Rifle Range £40.00
Max number per group 16, minimum age 10

Full instruction will be given on the use of the following equipment

Activity Maze £30.00
Max number per group 25

Assault Course £15.00

Skittle Alley £30.00
Max number per group 16

Giant Games £22.00
Max number per group 24

Initiative Exercises £22.00
Max number per group 18

Frisbee Golf £10.00
Max number per group 18

Push Ball £10.00

Bows & Arrows £15.00

GPS Navigation Half day £20.00

The Centre provides all necessary equipment for the above activities and 'With Instruction' the trained staff.

(Please note – If the Climbing Wall, Archery or Air Rifle Range is required without the Centre staff, the leader must hold a national recognised qualification in the activity).

***Equipment Hire** The Centre has available camping and various games equipment for hire. This includes 3/4/6 man Hike Tents, Mess Tents, Marquee, Tables & Chairs and a Sports Day Kit.

Walton Firs Activity Centre

Charity Number: 1113830

Scouts/Guides & Voluntary Sector Youth Organisations

Price List

1st February 2012 – 31st January 2013

(Including VAT where applicable)*

The 28 acres of open fields and woodland of Walton Firs, offers a safe and secure environment for a programme of challenging outdoor education and activities all year round. The Centre is open to Scouts, Guides, recognised voluntary sector youth organisations, Schools and Colleges. It is suitable for young people of all ages.

Activities include

Assault Course

Caving Experience

Archery

Camping (with open fire areas for cooking)

Climbing Tower

Crate Stacking Challenge

Maze

Facilities include

**Self contained wooden buildings with
dormitory accommodation**

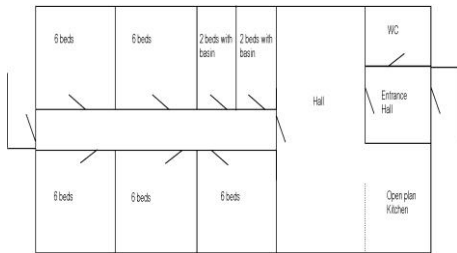
Indoor training facilities

Pembroke Building

**£180.00 per day including 24 people*

Maximum 34. Over and above 24: any additional occupant will be charged the normal camp fee

Pioneering, Games, Orienteering Maps, Photo Orienteering and Tree Trail equipment are all available at no extra charge.



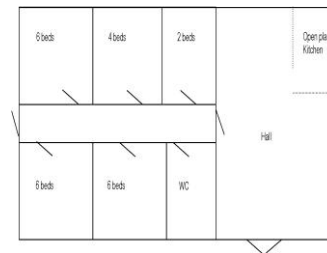
The Pembroke building provides indoor accommodation for a maximum 34 young people and leaders. The facilities include a fully equipped kitchen, large main room for dining, equipped with tables and chairs. Sleeping quarters comprise of 5 rooms with 6 beds, 2 rooms with 2 (all bunk beds). You will need to bring sleeping bags and pillows.

Brunswick Building

**£180.00 per day including 24 people*

Maximum 24

Pioneering, Games, Orienteering Maps, Photo Orienteering and Tree Trail equipment are available at no extra charge.



The Brunswick building sleeping quarters are 3 rooms with 6 beds, 1 room with 4 and 1 room with 2 (all bunk beds). Fully equipped kitchen and dining area with table and chairs.

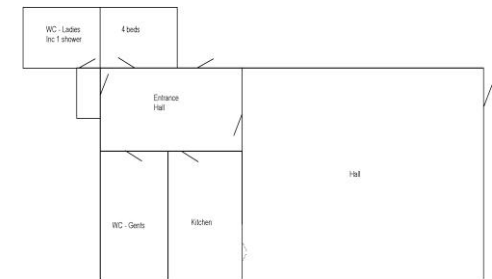
PLEASE NOTE: ALL CHARGES FOR BUILDINGS ARE FOR 24 HOURS OR PART THEREOF. GAS AND ELECTRICITY INCLUDED

Training Building

**£180.00 per day including 24 people*

Maximum 36. Over and above 24: any additional occupant will be charged the normal camp fee

Pioneering, Games, Orienteering Maps, Photo Orienteering and Tree Trail equipment are available at no extra charge.



The Training Hut can accommodate up to 36 people if used as indoor sleeping quarters. The facilities include a large main hall that can be used for indoor training or as a classroom. The building has a fully equipped kitchen, shower and toilet facilities. The Hut has leaders sleeping quarters with 4 beds (bunk beds) and camping mats are provided in the main hall. The Training Hut is also equipped with a projector and other teaching resources.