

Camping Fees

**£8.30 per person per day*

The above price includes the Camp Site & Firewood. Pioneering, Games, Orienteering Maps, Photo Orienteering and Tree Trail Equipment are available at no extra charge.



Day Visitor to the Centre

**£6.00 per person*

Groups wishing to use Walton Firs for a day of adventurous activities or for training are welcome. The same activities and equipment are available at no extra charge.

To build your programme of Activities further

– Your group may add the following activities: Climbing, Archery, Air Rifle Target Shooting, Caving or Crate Stacking Challenge with full instruction by Centre Staff. You can also make use of the other Centre Facilities at the prices listed overleaf to ensure a challenging and full programme depending on the length of your stay at Walton Firs, tailor made for the age range and experience of your group.

Cost of Centre Activities

PRICE PER PERSON PER HOUR

With full instruction

Caving Experience £5.50
Min 8, max 12 per group, minimum age 6

Climbing £5.50
Min 8, max 12 per group, minimum age 7

Crate Stacking £5.50
Min 8, max 12 per group, minimum age 7

Archery £5.50
Min 8, max 12 per group, minimum age 7

Air Rifle Shooting £5.50
Min 8, max 12 per group, minimum age 10

Full instruction will be given on the use of the following equipment

Activity Maze £2.00
Max number per group 18

Assault Course £1.00

Skittle Alley £2.00
Max number per group 18

Giant Games £1.00
Max number per group 24

Initiative Exercises £1.00
Max number per group 18

Frisbee Golf £1.00
Max number per group 18

Push Ball £1.00

Bows & Arrows £1.00

The Centre provides all necessary equipment for the above activities and 'With Instruction' the trained staff.

(Please note – If the Climbing Wall, Archery or Air Rifle Range is required without the Centre staff, the leader must hold a national recognised qualification in the activity undertaking).

Equipment Hire The Centre has available camping and various games equipment for hire. This includes 3/4/6 man Hike Tents, Mess Tents, Marquee & Tables & Chairs.

Walton Firs Activity Centre

Charity Number: 1113830

Schools & Non-Voluntary Sector Youth Organisations

Price List

1st February 2012 – 31st January 2013

(*Including VAT where applicable)

The 28 acres of open fields and woodland of Walton Firs, offers a safe and secure environment for a programme of challenging outdoor education and activities all year round. The Centre is open to Schools, Colleges and recognised youth organizations. It is suitable for young people of all ages.

Activities include

Assault Course

Caving Experience

Archery

Camping (with open fire areas for cooking)

Climbing Tower

Crate Stacking Challenge

Maze

Facilities include

Self contained wooden buildings with dormitory accommodation

Indoor training facilities

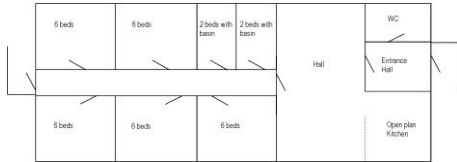
Pembroke Building

**£10.40 per person per day*

Maximum 34

(a minimum charge of 24 applies)

The above price includes Pioneering and Games Equipment, Orienteering Maps, Photo Orienteering and Tree Trail equipment, providing a package for teachers/leaders to plan and run their own programme, the use of the Pembroke building for activities and accommodation.



The Pembroke building provides indoor accommodation for a maximum 34 young people and leaders (a minimum group of 24 will be charged). The facilities include a fully equipped kitchen, large main room for dining, equipped with tables and chairs. Sleeping quarters comprise of 5 rooms with 6 beds, 2 rooms with 2 (all bunk beds). You will need to bring sleeping bags and pillows.

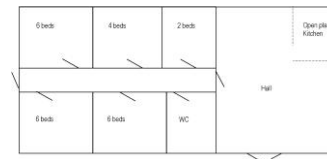
Brunswick Building

**£10.40 per person per day*

Maximum 24

(a minimum charge of 24 applies)

The above price includes Pioneering and Games Equipment, Orienteering Maps, Photo Orienteering and Tree Trail equipment, providing a package for teachers/leaders to plan and run their own programme, the use of the Brunswick building for activities and accommodation.



As for the Pembroke Package but for groups with a maximum of 24 (a minimum group of 24 will be charged). Sleeping quarters are 3 rooms with 6 beds, 1 room with 4 and 1 room with 2 (all bunk beds). Fully equipped kitchen and dining area with table and chairs.

PLEASE NOTE: ALL CHARGES FOR PACKAGES ARE FOR 24 HOURS OR PART THEREOF. GAS AND ELECTRICITY INCLUDED

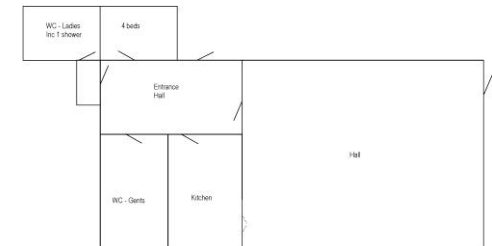
Training Building

**£10.40 per person per day*

Maximum 36

(a minimum charge of 24 applies)

The above price includes Pioneering and Games Equipment, Orienteering Maps, Photo Orienteering and Tree Trail equipment, providing a package for teachers/leaders to plan and run their own programme, the use of the Training Hut building for activities and accommodation.



The Training Hut can accommodate up to 36 people if used as indoor sleeping quarters (a minimum of 24 will be charged). The facilities include a large main hall that can be used for indoor training or as a classroom. The building has a fully equipped kitchen, shower and toilet facilities. The Hut has leaders sleeping quarters with 4 beds (bunk beds), and camping mats are provided in the main hall. The Training Hut is also equipped with a projector and other teaching resources.